

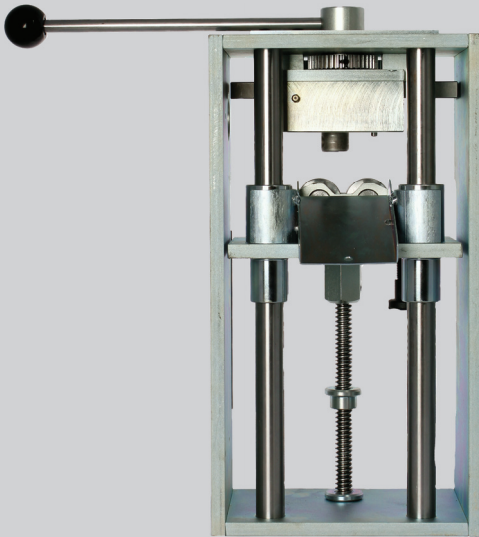
MarkMan II

Marking machine for ferrules

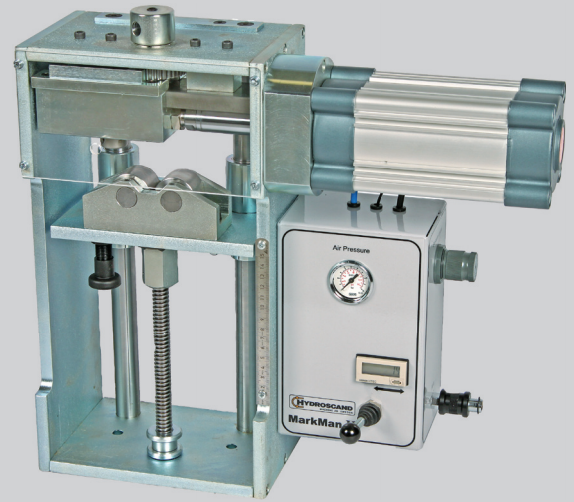
Manual or pneumatically driven machine for marking of ferrules (before swaging). The machine is suitable for ferrules from dia. 3/16" up to 2" and you can choose 2 or 3 row type print holder and 3 or 4 mm type height. There is also a 8 numbered marking wheel available.



MarkMan II Manual



MarkMan II Pneumatic



ACCESSORY

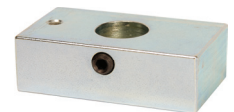
DESIGNATION:

PART NUMBER:

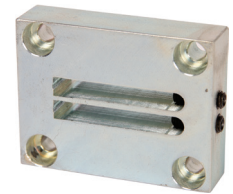
Type case 4x8x18 mm	9031-00-04
Type case 3x6x19 mm.....	9031-12-04
Type print holder 2 lines (4 mm, 9 types)	9031-10-03
Type print holder 3 lines (4 mm, 10 types)	9031-10-04
Type print holder 2 lines (3 mm, 13 types)	9031-11-03
Type print holder 3 lines (3 mm, 13 types)	9031-11-04
Type print holder special.....	9031-10-07
QC - adapter for type print holder.....	9031-10-05
Marking wheel, 8 wheel	9031-00-06
QC - adapter for marking wheel	9031-10-06



Type case



QC - adapter



Type print holder

DIMENSIONS MANUAL

Length/ Width/ Height 500x200x500 mm
 Weight 28 kg

DIMENSIONS PNEUMATIC

Length/ Width/ Height500x380x500 mm
 Weight35 kg

DESIGNATION:

PART NUMBER:

MarkMan II, manual.....	9031-10-01
MarkMan II - P, pneumatic	9031-10-02

TECHNICAL DATA

Ferrules dimension.....3/16" – 2"
 Ferrules diameter outsidemin. 13 mm - max. 85 mm"
 Air pressure 6 bar
 Colour..... Zinc plated